

IRONING TABLE
AND 040



USER'S AND MAINTENANCE MANUAL

INDEX

01 - SAFETY NOTICES	3
02 - GENERAL DESCRIPTION AND INTENDED USE	3
03 - EQUIPMENT IDENTIFICATION	3
04 - TECHNICAL FEATURES	4
05 - DETAILS FOR CONNECTIONS	4
06 - IDENTIFICATION OF MAIN COMPONENTS	5
07 - IDENTIFICATION OF MAIN ACCESSORIES	5
08 - CONTROL AND SIGNALING DEVICES	6
09 - PRECAUTION	6
10 - INSTRUCTIONS FOR USE	6
11 - HAZARDOUS USE	7
12 - HANDLING AND TRANSPORT	8
13 - MACHINE UNPACKING AND INSTALLATION	8
14 - TROUBLESHOOTING AND SOLVING	9
15 - MAINTENANCE PROCEDURES	10
16 - DISPOSAL	10
17 - HOW TO ORDER SPARE PARTS	10
18 - OVERALL DIMENSIONS AND DRAWINGS	14
19 - WARRANTY	17

01 - SAFETY NOTICES

This user manual and maintenance refers to the product: Ironing table “AMBRIA”
It is possible to receive the latest release from our Technical Commercial Department.

The present user's and maintenance manual contains important information for the operator's health safeguard and safety.

Read completely this manual with attention and strictly follow the procedures described in it before installing the equipment and starting it up. Keep this manual carefully and always at the disposal of the product operating personnel.

The manual contains the following graphic symbols that identify clearly important warnings and safety notices:



WARNING!



PROHIBITED!



WARNING! ELECTRICAL PARTS
UNDER VOLTAGE



PROHIBITED TO WALK
OR USE AS SUPPORT



WARNING! HOT SURFACE



KEEP THE EQUIPMENT
AWAY FROM CHILDREN

Failing to follow the indications in this manual could forfeit personnel safety!



Any possible modifications effected on the components of the machine or its different use without prior written authorization by the manufacturer, relieve the latter of injury to persons and / or damages to things, voiding any warranty bindings, as well.

The manufacturer cannot be held liable for any damage to things or injury to persons caused by improper use of the machine in contrast with these instructions.

02 - GENERAL DESCRIPTION AND INTENDED USE

This equipment is intended for professional use and aimed at professionals and skilled workers.



Keep the equipment in every state (still packaged, off, running, etc.) away from children and unskilled.

The ironing table AMBRIA is completely self-contained and doesn't require any supporting equipment for its operation. This machine uses an external power supply for its operation.

The machine features a broad universal ironing board and (on request) a sleeve shape with vacuum (both of which are padded and electrically heated), as well as a garment tray, a control panel to adjust the board temperature and to operate the different work stations, a professional steam iron, a built-in boiler with automatic water feeding and an automatic pressure control. Furthermore, it is possible to install on request a steam-air gun, a heated egg shape and a stainless steel spotting shape.

The operation is very user-friendly and efficient, thanks to its control by pedal.

03 - EQUIPMENT IDENTIFICATION

On the side of the machine is placed an identification plate on which there is:

- Model
- Serial number
- year of construction.
- Supply voltage
- Electrical power consumption ($\pm 5\%$).
- Nominal steam pressure

04 - TECHNICAL FEATURES

Power supply (*1)	230V – 1ph / 50 Hz 230-400V – 3ph / 50 Hz			
Power consumption $\pm 5\%$ (*1)	Boiler	Steam	Sleeve	Table
	3,3 - 3,9 - 4,8 - 6 kW	0,83 kW	0,14 kW	1 kW
Vacuum motor	0,6 Hp			
Pump motor (*2)	0,5 Hp			
Boiler volume	5 dm ³			
Steam pressure	2,8 bar			
Steam consumption	2 ÷ 10 kg/h			
Sound intensity level	< 70 dB(A)			
Working temperature	+ 5 ÷ + 80 °C			
Working humidity	90 % max.			
Storing temperature	- 20 ÷ + 50 °C			
Net dimension	1550 x 580 x 950 mm. (1650 x 680 x 950 mm maxi)			
Net weight	87 kg (94 kg maxi)			
Overall dimensions (packaging included)	1550 x 580 x 1120 mm (1750 x 700 x 1120 mm maxi)			
Gross weight (packaging included)	103 kg (116 kg maxi)			



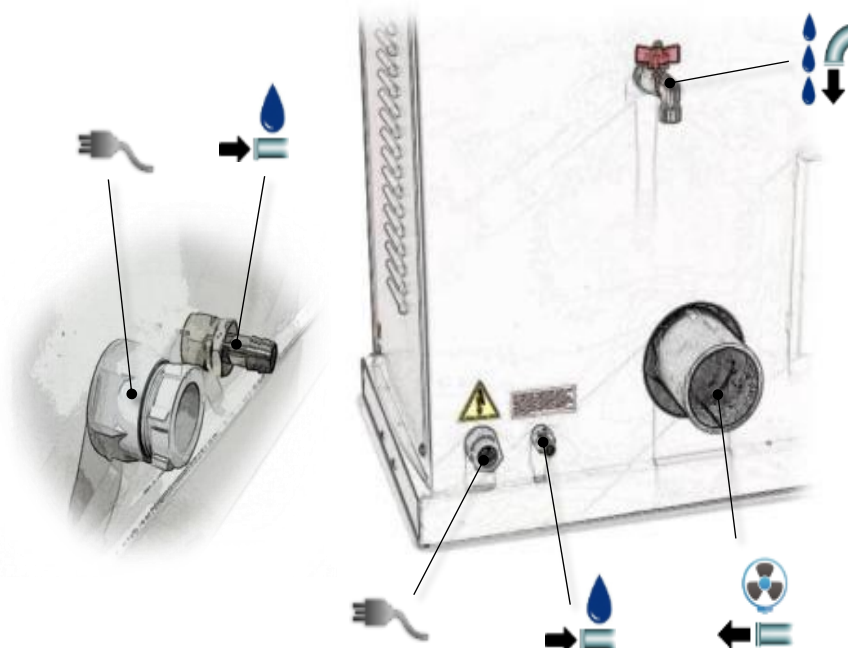
WARNING: The machine must not be supplied with different voltages than those indicated on the identification plate.

(*1) According to the characteristics defined during order

(*2) Optional on request defined during order

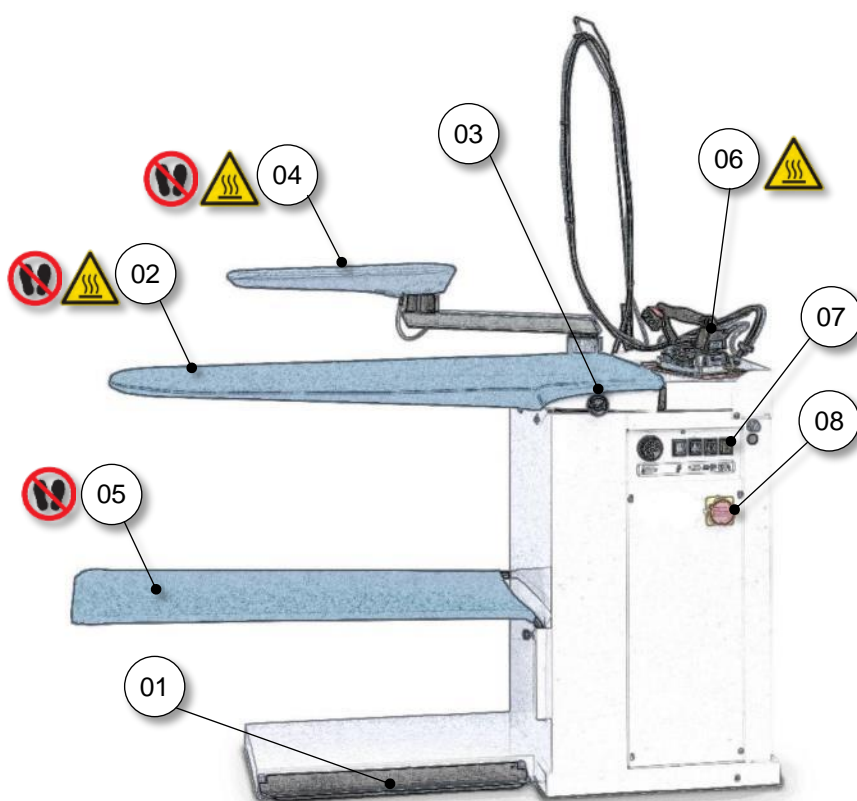
05 - DETAILS FOR CONNECTIONS

SIMBOL	DESCRIPTION	Ø
	STEAM OUTLET FOR IRON OR ACCESSORY	Ø 6mm
	WATER INLET	Ø12mm
	COMPRESSED AIR INLET	Ø 6mm
	EXHAUSTED SUCTION AIR OUTLET	Ø 90mm
	ELECTRICAL CABLE INLET	PG21
	BOILER DRAIN OUTLET	G 3/8"



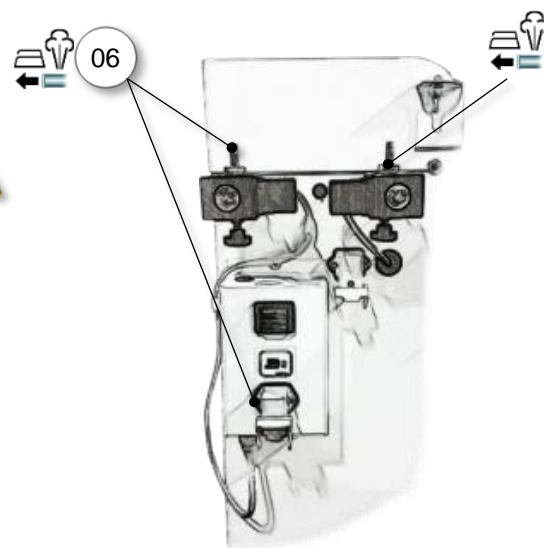
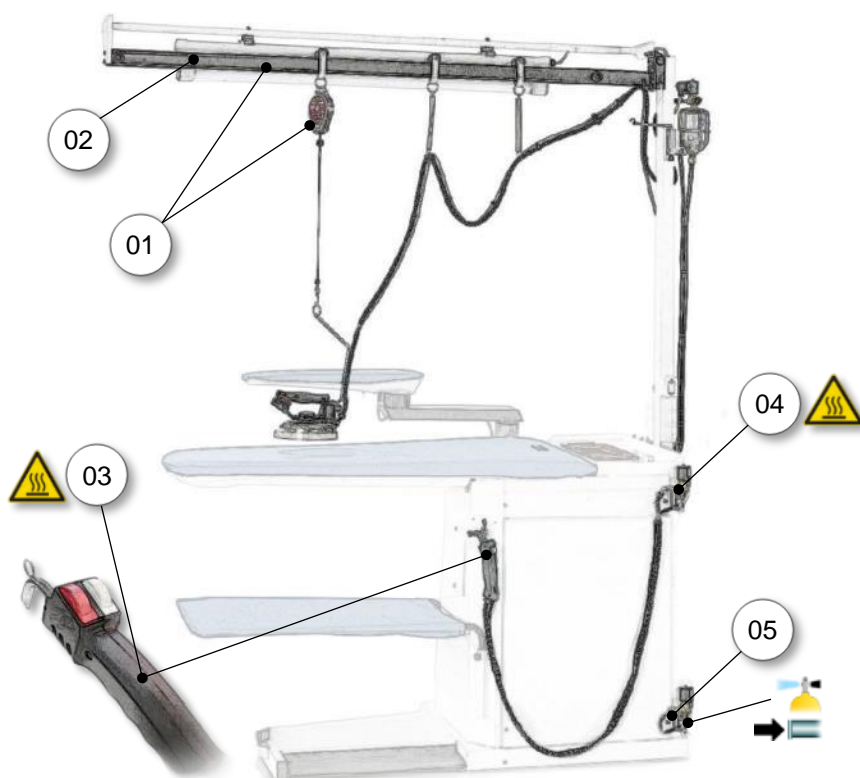
06 - IDENTIFICATION OF MAIN COMPONENTS

- 01 – VACUUM PEDAL
- 02 – IRONING TABLE
- 03 – ADJUSTMENT
- 04 – HEATED SLEEVE SHAPE (OPTION)
- 05 – CLOTH FOR GARMENT TRAY
- 06 – STEAM IRON
- 07 – CONTROL PANEL
- 08 – MAIN DISCONNECTING SWITCH (OPCIONAL)
- 05 – TECIDO SUPORTE PARA VESTUÁRIO
- 06 – FERRO DE PASSAR
- 07 – PAINEL DE COMANDOS
- 08 – INTERRUPTOR SECCIONADOR



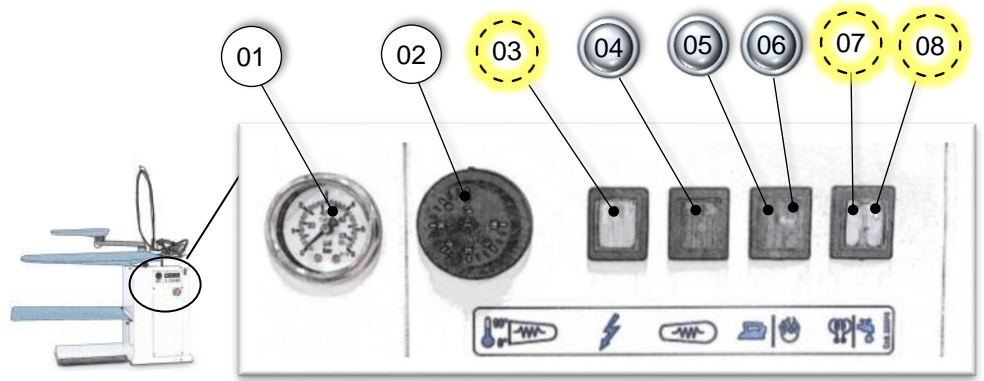
07 - IDENTIFICATION OF MAIN ACCESSORIES

- 01 – IRON RAIL (OPTION)
- 02 – LIGHTING RAIL (OPTION)
- 03 – AIR-STEAM GUN (OPTION)
- 04 – STEAM ADJUSTMENT (OPTION)
- 05 – AIR ADJUSTMENT (OPTION)
- 06 – SMALL CONTROL CASE FOR 2ND IRON FITTING (OPTION)



08 - CONTROL AND SIGNALING DEVICES

- 01 - BOILER PRESSURE GAUGE
- 02 - BOARD HEATER THERMOSTAT
- 03 - WARNING LIGHT "UNDER TENSION"
- 04 - 1st HEATED SLEEVE SHAPE SWITCH (OPTION)
- 05 - SWITCH FOR 1st IRON
- 06 - BOILER SWITCH
- 07 - WARNING LIGHT "HEATER ON"
- 08 - WARNING LIGHT "PUMP RUNNING"



09 - PRECAUTION

Read carefully the instructions and the risks related to the use of an ironing table. The operator has to know its working functions and must clearly understand its dangers with the help of the manual.



If the machine features a steam iron, do not leave it switched on too long and place it always on the relevant iron rest. The ironing boards and the soleplate of the iron remain hot for some minutes after their switching-off, please pay therefore attention to the risks of burns and do not put objects on the table until its complete cooling-down.



Main electrical supply

Prior to carrying out any inspection or service on the machine, it is necessary to disconnect it from the main electrical supply. Make sure, that nobody can reconnect it during the technical service. Every installed electrical or electronic equipment must be earthed.



Inflammability

Adopt all the necessary precautions to avoid any direct contact of the machine with hot materials or flames. Put fire extinguishers near the machine for an immediate intervention in event of fire.



Pressure / Steam

Before each intervention, switch off the boiler first and check that there are no residual pressures inside the boiler or in any branch of the hydraulic circuit, as they could cause steam or product spurts, in case of disassembly of fittings or other components.

Noise

The noise emission is not excessive, because it remains under 70dB(A).

10 - INSTRUCTIONS FOR USE

PUTTING INTO OPERATION



The whole unit can be used, opened and repaired by qualified technicians only.

It is forbidden to use the machine if flooded by liquids or in particularly aggressive or explosive/inflammable places.

Always use suitable pipes according to the working pressure.

Do not ignore the dangers for the operator's health and follow the hygienic and safety regulations.

Check that the electrical wiring is carried out correctly according to the current regulations, and that the fuse blocks are closed and complete of fuses.

Make sure that the machine is intact.

Check that the control and safety boiler devices (manometer, pressure switch, and safety valve) are intact.

Make sure that the boiler discharge gate is well closed

USE



WARNING: The first use of the equipment after installation or maintenance must be done on a trial basis and regulation of all parts and accessories using tissues or garments not important. Some parts of the machine may leave halos or spots as used for the first time. This situation may also not occur but is not a fault.

- 1) Open the on-off valve of the water supply.
- 2) Turn on the main switch of the machine.
- 3) Press the boiler button.
- 4) The warning light of the water supply switches on automatically (the water starts running into the boiler).
- 5) Once the water has reached the required level the relevant warning light switches off automatically, whereas the one of the boiler heater turns on.
- 6) After a few minutes the boiler reaches the working pressure of 2.6 bar (check the pressure on the pressure gauge), the relevant warning light switches off automatically.
- 7) The generator is now ready to supply steam.
- 8) Adjust the board temperature by means of the thermostat wheel.
- 9) Wait until the boards reach the required temperature.
- 10) Push the pedal to put the air suction on boards into operation.
- 11) At the end of the work, turn off the table by means of the relevant buttons.

USE OF THE SLEEVE SHAPE

- 12) By drawing the sleeve shape towards the ironing surface, Push the pedal for the vacuum operation.

USE OF THE STEAM IRON TYPE "U"

- 13) Turn on the iron switch.
- 14) Switch on the iron a few minutes before you start working, until the soleplate has reached the adjusted temperature.
- 15) In case the temperature of the soleplate has to be kept very high, we recommend to apply a Teflon® shoe in order to prevent burns of the garment.

USE OF THE STEAM-AIR GUN

- 16) Place the garment to be treated onto the spotting shape, making sure that it lies exactly on the vacuum part.
- 17) Push the vacuum pedal; by turning the condensation-jet of the gun first towards a tank until only steam comes out.
- 18) Draw the gun closer to the part to be treated, by pushing at the same time both the vacuum and the steam pedal.
- 19) Once the stain is dissolved, dry the treated part by pushing simultaneously the vacuum pedal and airbutton on the gun.

11 - HAZARDOUS USE

The conformity verification, according to the essential safety rules and to the provisions of the machine directive, has already been carried out by filling out the specially provided checking lists that are included in the technical file. The checking lists are of two kinds:

- List of dangers (drawn from EN 1050 referring to EN 292)
- Application of the main safety features (Machine Directive– appendix. 1, part 1)

The dangers described in the following have not been completely removed, but they have been deemed to be acceptable:



During the maintenance operation there could be some steam jets at low pressure, (maintenance operation must therefore be carried out by using suitable protection devices)
The user must provide for a protection against direct and indirect contacts.



- SAFETY SHOES.
- VISOR FOR PROTECTION.
- PROTECTIVE GLOVES.

12 - HANDLING AND TRANSPORT

Before its shipment, the machine is carefully packed in a carton box or in a wooden frame. During the shipment and storing of the machine, pay particular attention to the upside indication on the packaging. Upon receipt, please check that the packing is intact and store the machine in a dry place.

13 - MACHINE UNPACKING AND INSTALLATION



ATTENTION: The unit must be installed, opened and repaired by fully qualified technicians only. If the unit has been damaged externally during transport, may have suffered internal damage to its components. Check the integrity of the machine before installation.

UNPACKING:

Find the most suitable place where to put the machine, then remove the packaging. Make sure that the machine has not been damaged during the transport and the storage.

The packaging material does not require any special precautions for its disposal, for it is not dangerous or polluting at all. Please refer to the local regulations for its disposal.

INSTALLATION:

The machine does not need to be anchored to the floor, except for installation on self-moving means, where it is necessary to use the holes on the base for the right fixing.



For a correct use and operation, as well as for an easy maintenance, leave a free space around the machine



Do not install the machine in dangerous and/or inflammable places and/or unsuitable places. Do not install the equipment on a inclined pavement or on unstable supports interposed between the machine and the floor, danger of overturning.



Do not step on and not to use the equipment and its work plans as a ladder to reach the high points, and generally do not use it as a support tool. Risk of damage and injury.

ELECTRICAL WIRING:

The electrical wiring must be carried out as indicated in the drawing. Check that the supply voltage and the frequency correspond to those indicated on the rating plate.



The dimensions of the supply cable must suit the machine absorption and comply to the current regulations.

For connect the equipment to the line the cable must be fitted with a suitable industrial type plug.

It is advisable to wrap around the cable with some straps and hold the skein adjacent to the machine during all phases of installation and maintenance (see figure), so be sure the equipment is physically disconnected from the power line and that no one can accidentally reconnecting it.

Cut the straps and connect the line only after finishing all installation or maintenance operation, the equipment must have mounted all the protection panels



It is advisable to install a switch with fuses or a magnetothermal one.

Put the cable in the cable passage hole, then tighten. Connect the cable to the terminals of the feeder line on the control panel, as shown on the drawing of the present manual.

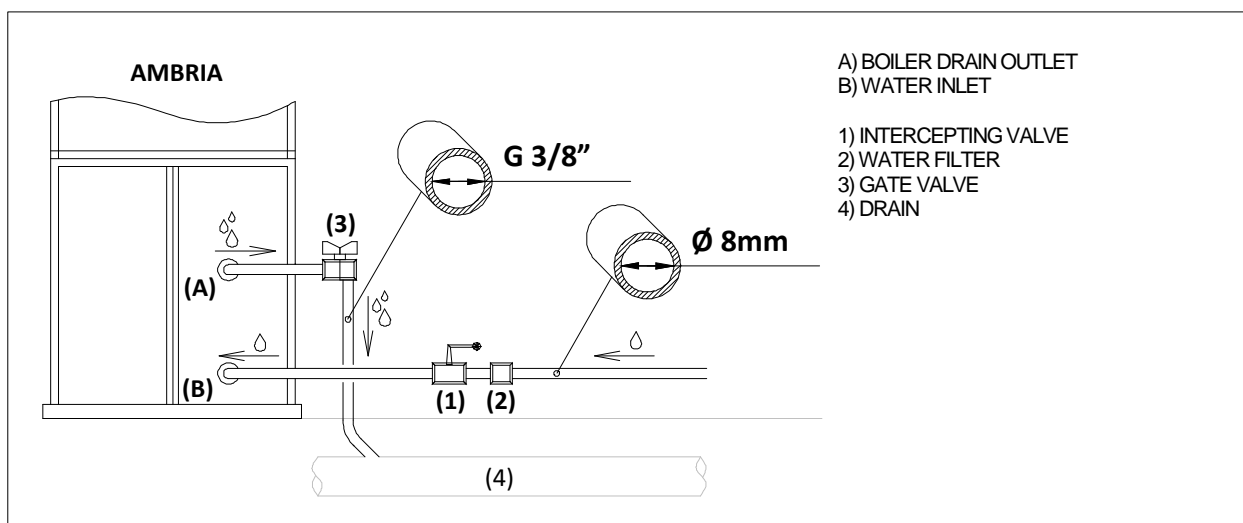
Check the rotation direction of the motors; if not correct, invert two of the three input phases with each other.



After all the connections to make sure that the power cables are properly secured and protected from shocks and from contact with hot and/or sharp surfaces.

WATER AND OUTLET BOILER CONNECTION (only for machines with boiler)

Connect the water pipe to the hose holder of the machine. Assemble an intercepting valve and a filter on the water feeding pipe. The water inlet has to be closed every evening to avoid eddies in the boiler. Connect the boiler outlet to the gate valve to the drain.



COMPRESSED AIR CONNECTION: (OPTION)

Connect the machine to a central compressed air using the appropriate input, the internal diameter of the pipe must not be lower than that indicated.

Use an intercepting valve to stop the feeding in case of maintenance and at the end of work.

Verify that system pressure is between the operating values suggested for the equipment, otherwise install a pressure reducer.

CONNECTION OF AIR AND STEAM DISCHARGE (only for equipment with suction blower)

It is advised to discharge the air suctioned by the working planes to the outside of the working place by connecting a pipe to the suction blower outlet. This pipe must have suitable length and diameter in order not to alter equipment working.

14 - TROUBLESHOOTING AND SOLVING

The following diagnostic table reports the main problems which might occur, their probable causes and possible solutions. In case of doubts and/or unsolvable problems using this table, do not look for the malfunction by dismantling the equipment or by proceeding by attempts, but contact the Technical Office or reseller.

DIAGNOSTIC TABLE		
PROBLEMS	POSSIBLE CAUSES	SOLUTIONS
No suction on the boards	Micro-switch of the pedal defect	Replace the micro-switch
The boards do not heat up	Thermostat defect	Replace the thermostat
The machine doesn't turn on	Main switch not on	Check if the main switch is on and the fuses.
	Switch turned off	Turn on the switch
No steam is coming out	Iron or boiler switch not turned on.	Turn the switches on
The water warning light is turned on and the water pump keeps on running without stopping	No water is streaming into the boiler	Check if the water cock is open.
		Check the presence of pressure inside the water mains.
		Check if the water filter is obstructed.
The heater warning light is always switched on and the boiler doesn't reach the working pressure	Leak on the boiler exhaust	Check if the gate valve of the boiler exhaust is well closed.
	Burnt heater or covered with scale	Check the heater condition.



ATTENTION: if the safety valves is released, switch the boiler immediately off and contact a qualified technician. Do not block the exhaust and do not underestimate the problem, as there could be risk of explosion.

15 - MAINTENANCE PROCEDURES

In case of irregularities or malfunctioning, please contact the service technician for the relevant checks.

Periodically, it is necessary to carry out the following operations:

OPERATION	WORKING HOURS
Boiler discharge (*)	40
Cleaning of the water filter	1500
Cleaning both of boiler and heating elements	2500
Cleaning of the condensation return filter	500

(*): Discharge the boiler once it has reached 1 bar of pressure, in order to remove any limescale or dirt deposits. When the machine is switched off, open slowly the gate valve of the boiler exhaust. We recommend to carry out this operation before you start working and not in the evening at the end of work, as the fresh water streaming into the boiler is rich in oxygen, increasing during the night the corrosion process inside the drum.

This machine does not require special equipment for check and/or maintenance operations. It is however advisable to use suitable tools and personal protections in compliance with the Italian law by decree 626/94, which have to be in good conditions (Presidential Decree 547/55), in order to avoid any damages to persons or machine components.



Make sure that the power and hydraulic supply are disconnected prior to any maintenance service and that the whole equipment is cooled down.

16 - DISPOSAL

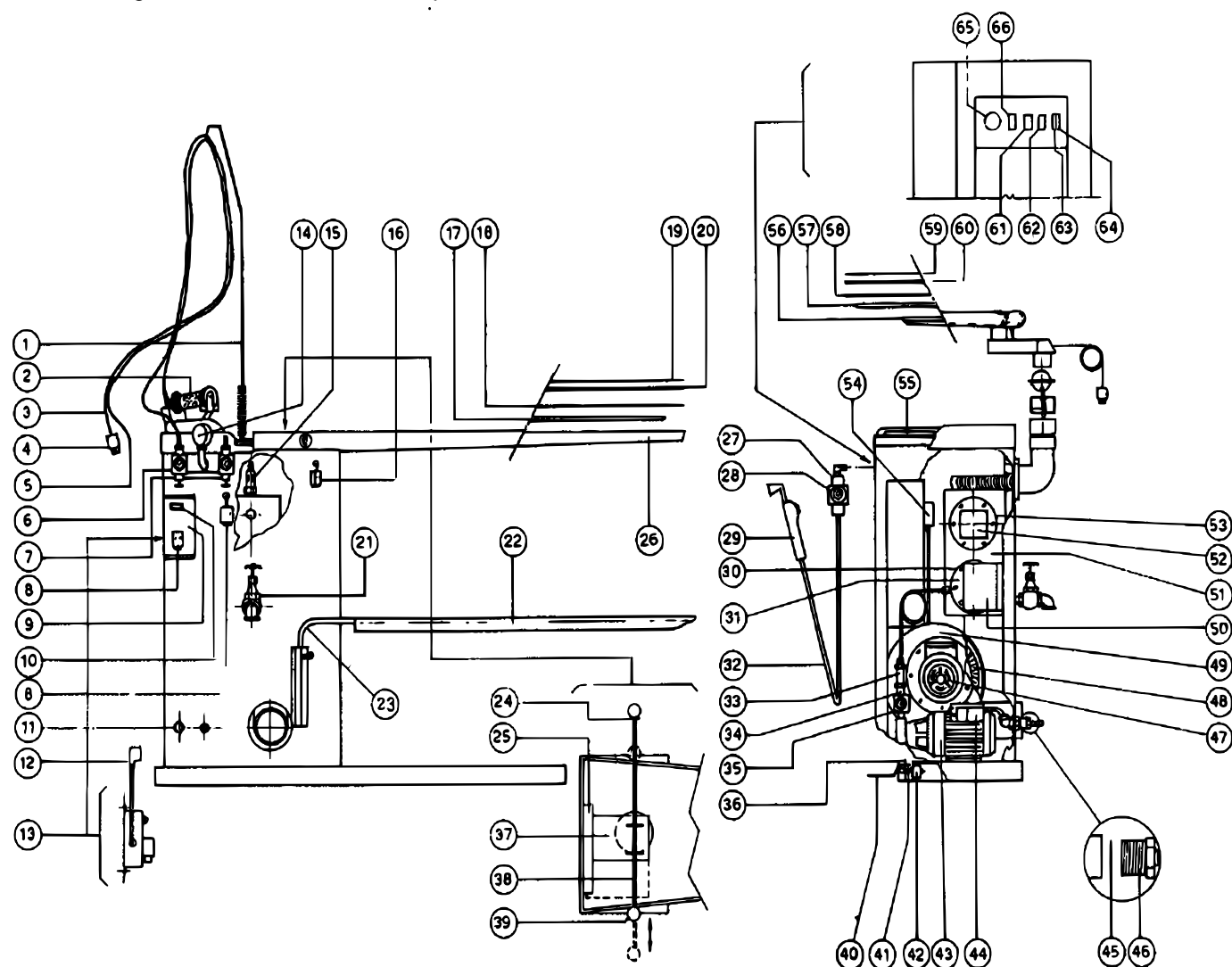
During the maintenance on the machine, or in case of its scrapping, please dispose carefully and correctly of any polluting components, according to the local regulations. In case of scrapping, the identification rating plate and any other document have to be destroyed.

17 - HOW TO ORDER SPARE PARTS

Upon the spare parts request, please quote always:

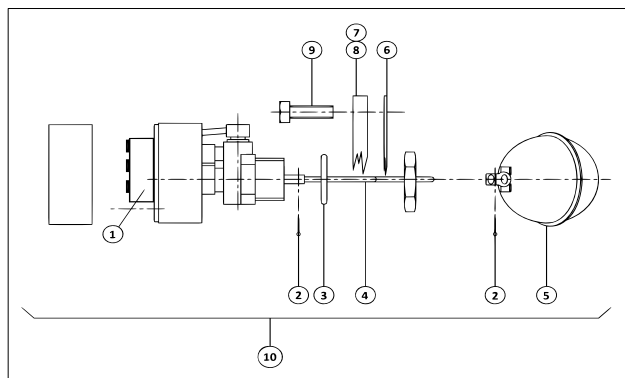
Machine type, serial number, quantity of the requested spare parts, article number (these data can be read on the rating plate or supplied by the technical information of the machine and by the user's and maintenance manual). For electrical components with a different voltage and frequency than V 230-380 50Hz (data available on the rating plate of the faulty component), specify the right voltage and frequency after having mentioned the article number. The technical data, the descriptions and pictures included in this manual are not binding. The manufacturer reserves the right to make any necessary modification without notice or having to up-date the present manual.

The following are the main machine components:



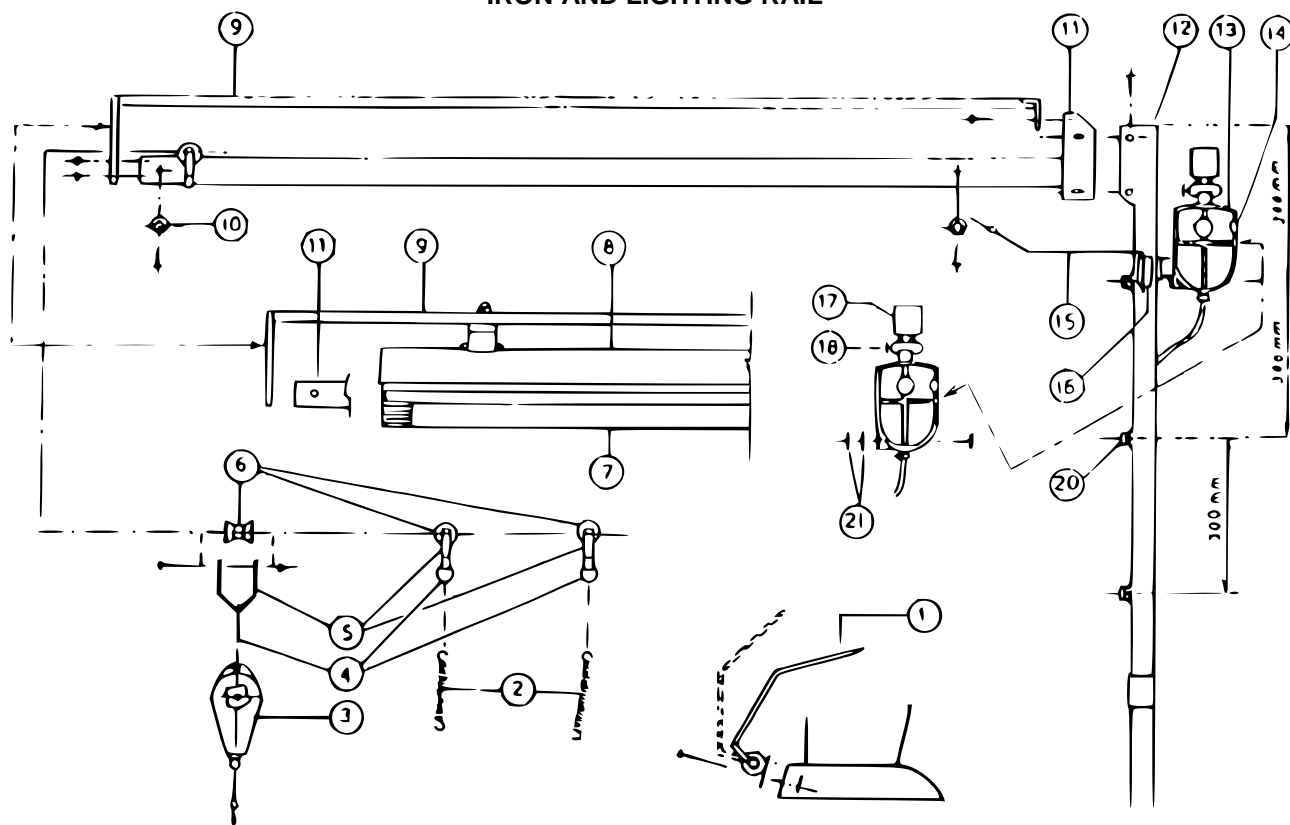
Pos	Cod.#	DESCRIPTION	Pos	Cod.#	DESCRIPTION	Pos	Cod.#	DESCRIPTION
1	534269	Antenna for cable	25	24A011	Or-ring	46	36E006	Hose holder Ø12mm
2	Z01L10	Steam iron	26	162114	Universal table	47	42A002	Vacuum motor 230V / 50-60Hz
3	Z23C01	Electric cable	27	39B012	Solenoid valve for steam gun	48	42H002	Vacuum fan Ø180x72
4	43H006	Iron plug by Ilme	28	39H043	Coil for steam gun solenoid valve	49	340017	Vacuum fan wheel box
5	07A001	Steam tube	29	Z07A00	Steam gun	50	173470	Safety cover
6	39H043	Coil for steam iron solenoid valve	30	244236	Flange gasket Ø135mm	51	202128	Boiler
7	39B012	Steam solenoid valve for iron	31	212061	Boiler heater 3,9 kW	52	49A002	Automatic level control
8	43G004	Iron socket by Ilme		212060	Boiler heater 3,3 kW	53	244236	Flange gasket Ø135mm
9	173441	Small control case for 2nd iron fitting		212063	Boiler heater 4,8 kW	54	45G012	Pressure switch 2,8 bar
10	43A020	2nd iron switch		212062	Boiler heater 6 kW	55	25A001	Iron rest out of silicone
11	46C002	Power supply inlet PG21	32	07A002	Steam tube out of silicone	56	340019	Sleeve shape
12	-		33	38W001	Check valve	57	213113	Sleeve shape heater
13	Z18000	Complete fitting for second iron	34	39B036	Water solenoid valve	58	173323	Sleeve shape plate
14	35A015	Pressure gauge	35	39H015	Coil for water solenoid valve	59	Z27P14	Sleeve shape cloth
15	38S001	Safety valve	36	-		60		Padding and net for sleeve shape
16	43G005	Socket for heated shape by Ilme	37	173329	Plate out of stainless steel	61	43A020	Sleeve shape switch
17	213005	Table heater	38	184466	Rod for stainless steel plate	62	43A014	Iron switch
18	161020	Perforated plate for universal table	39	52C003	Knob	63	43A043	Main switch
19	Z27P11	Padding and cloth for maxi table	40	175103	Vacuum pedal	64	43A016	Boiler warning light
20	Z27P31	Padding and cloth	41	-		65	45A010	Table thermostat
21	37A010	Gate valve for boiler exhaust	42	43D002	Vacuum micro-switch	66	43A046	Voltage warning light
22	274203	Cloth for garment tray	43	42B030	Water pump 230V / 50Hz	67	43A014	Boiler switch
23	175005	Garment tray	44	42G021	Pump condenser MF 10	68	43A016	Water warning light
24	161037	Stainless steel rail	45	174356	Water filter			

AUTOMATIC LEVEL CONTROL



Pos.	Cod.#	DESCRIPTION
1	43D014	Microswitch
2	51P007	Split pin Ø2 x 20
3	24E003	Level gasket TEFLON®
4	184318	Supporting floating rod
5	49G001	Ball
6	244236	Flange gasket
7	183270	Flange Ø135
8	183273	Flange Ø135 with ISPESL certification
9	50A016	Screw M10 x 25 ASTM-A193-B7
10	49A002	Complete automatic level

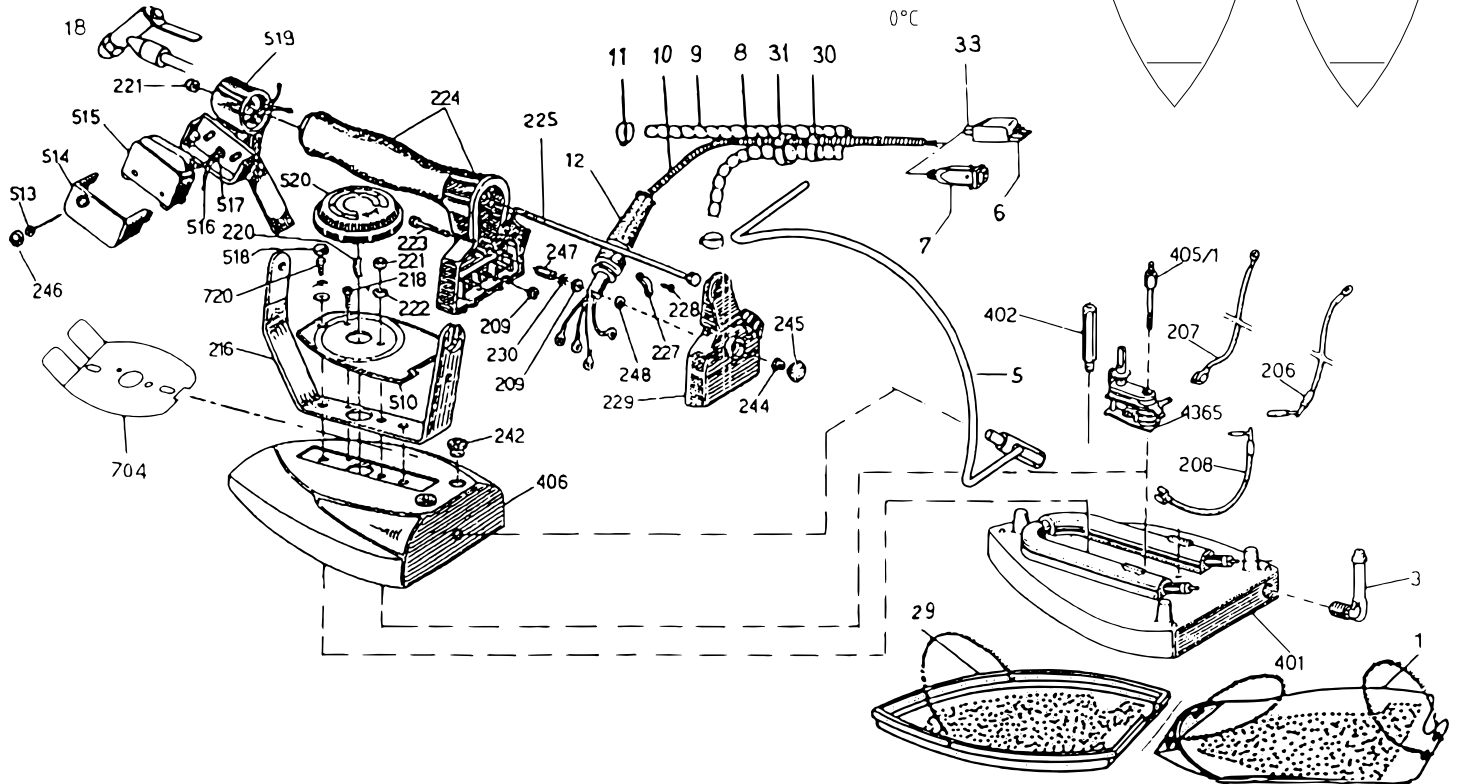
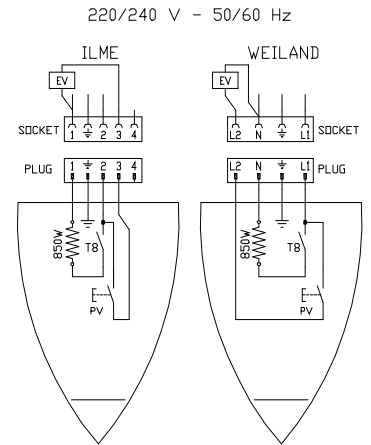
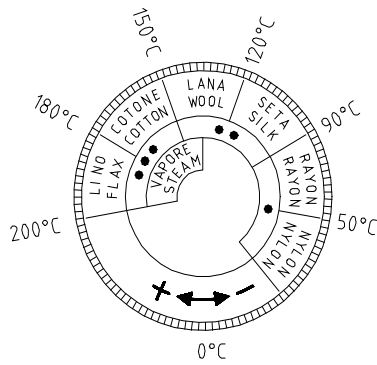
IRON AND LIGHTING RAIL



Pos	Cod.#	DESCRIPTION	Pos	Cod.#	DESCRIPTION	Pos	Cod.#	DESCRIPTION
1	Z01L15	Steam iron	11	173304	Track L150	20	46R005	Cable holder
2	534264	Spring		173024	Track L178	21	244244	Gasket 30x7x3
3	54A001	Balancing device	12	173028	Upper column	22	43K005	Switch box
4	51X010	Ring	13	202031	Condensation separator	23	43A003	Switch
5	174022	Bracket	14	275005	Insulator for condense vessel	24	43H007	Plug
6	234078	Complete wheel	15	174520	Accessory holder	25	174017	Spacer L35
7	43C009	Lamp 36W - 230V	16	174521	Bracket for accessory holder	26	173011	Bottom column
8	43C021	Complete upper light fixture	17	39H043	Coil for steam iron solenoid valve			
9	174085	Front lamp support	18	39B012	Steam iron solenoid valve			
10	22A002	Bumper foot	19	175108	Supporting bracket for condensation separator			

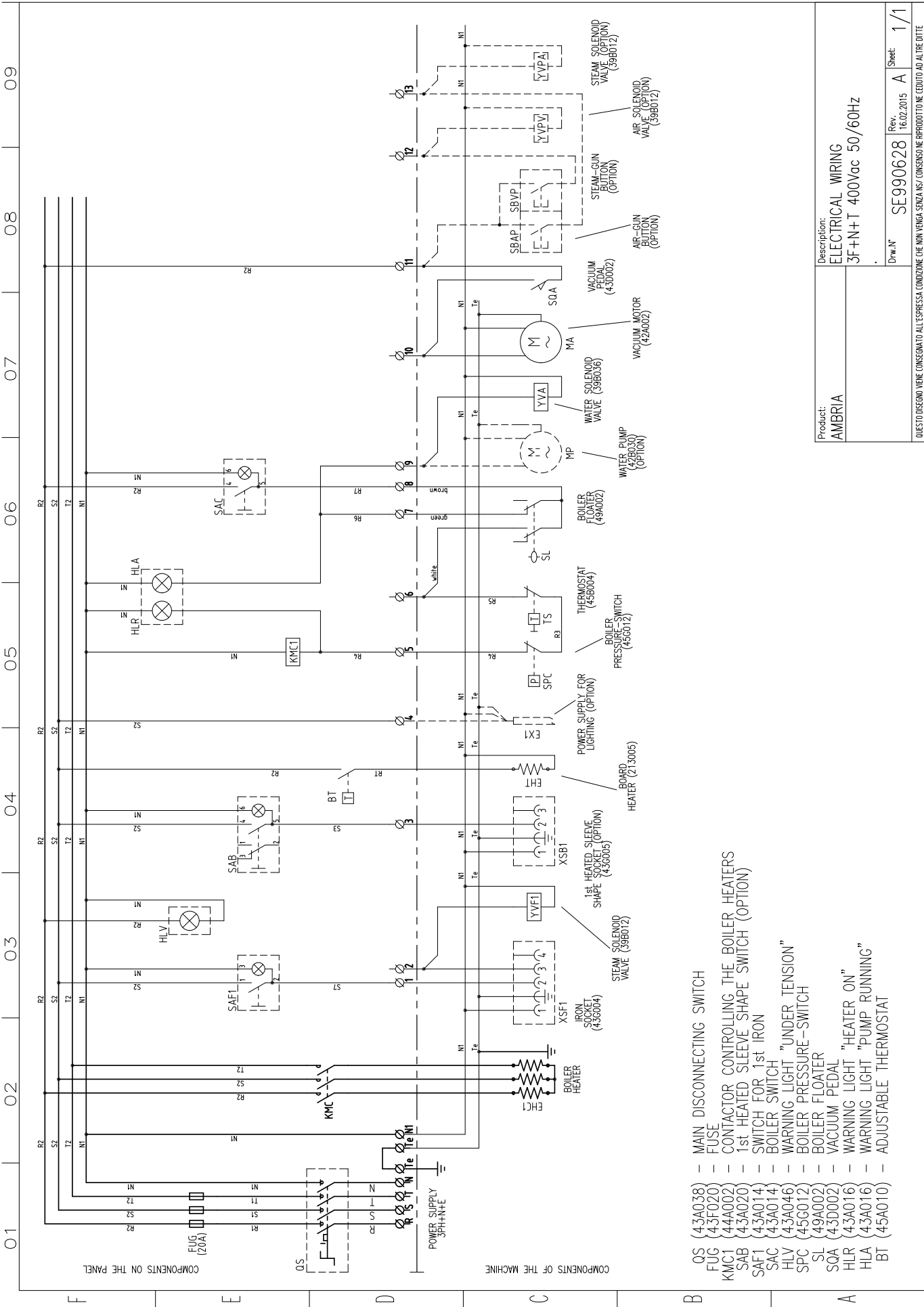
STEAM IRON MOD. U

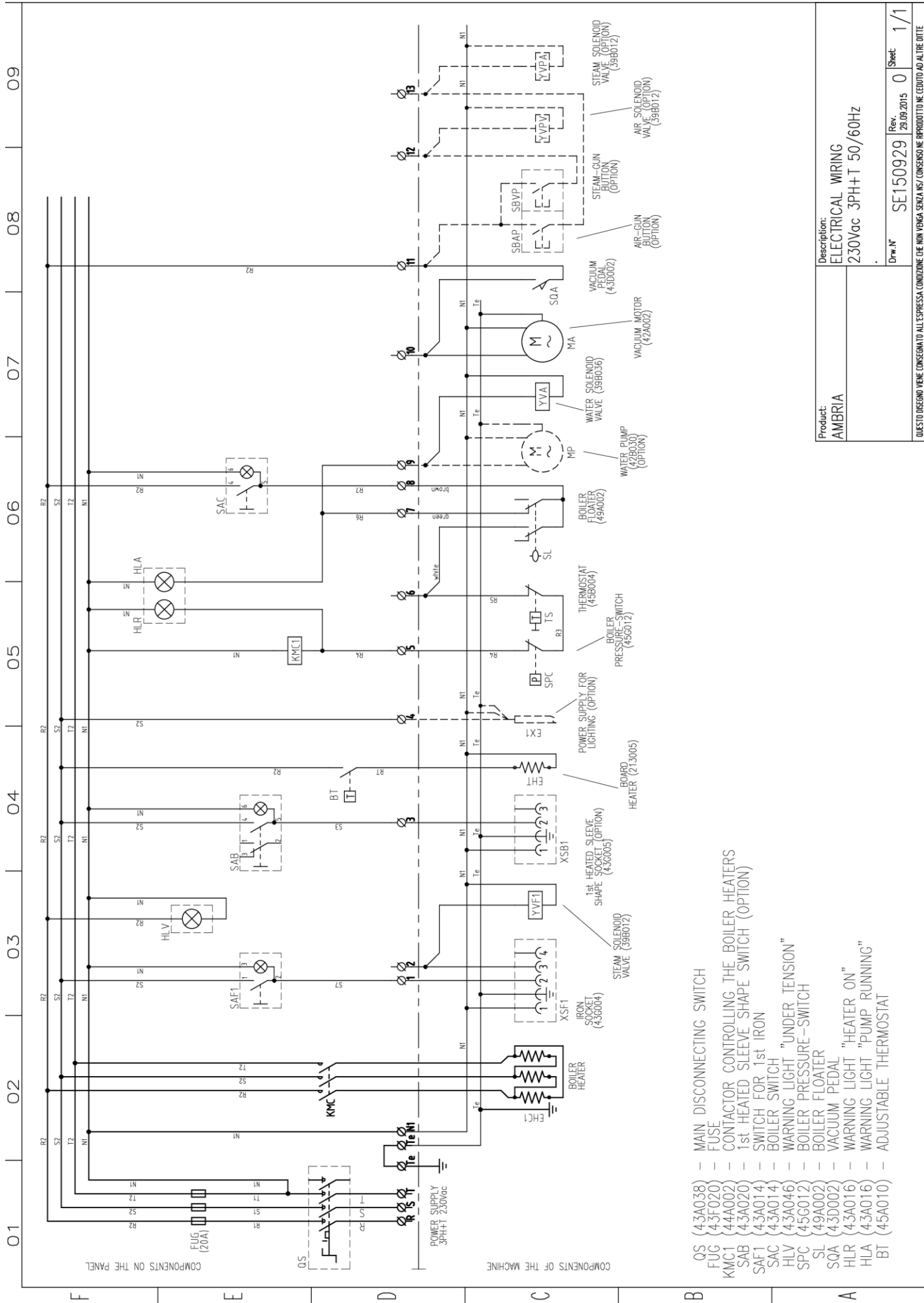
TECHNICAL FEATURES	
Power supply	220/240Vac 50/60Hz
Iron heater	0,830 kW
Working temperature	+ 5 ÷ + 40 °C
Working humidity	90 % max.
Storing temperature	- 20 ÷ + 50 °C
Net weight	1,8 kg

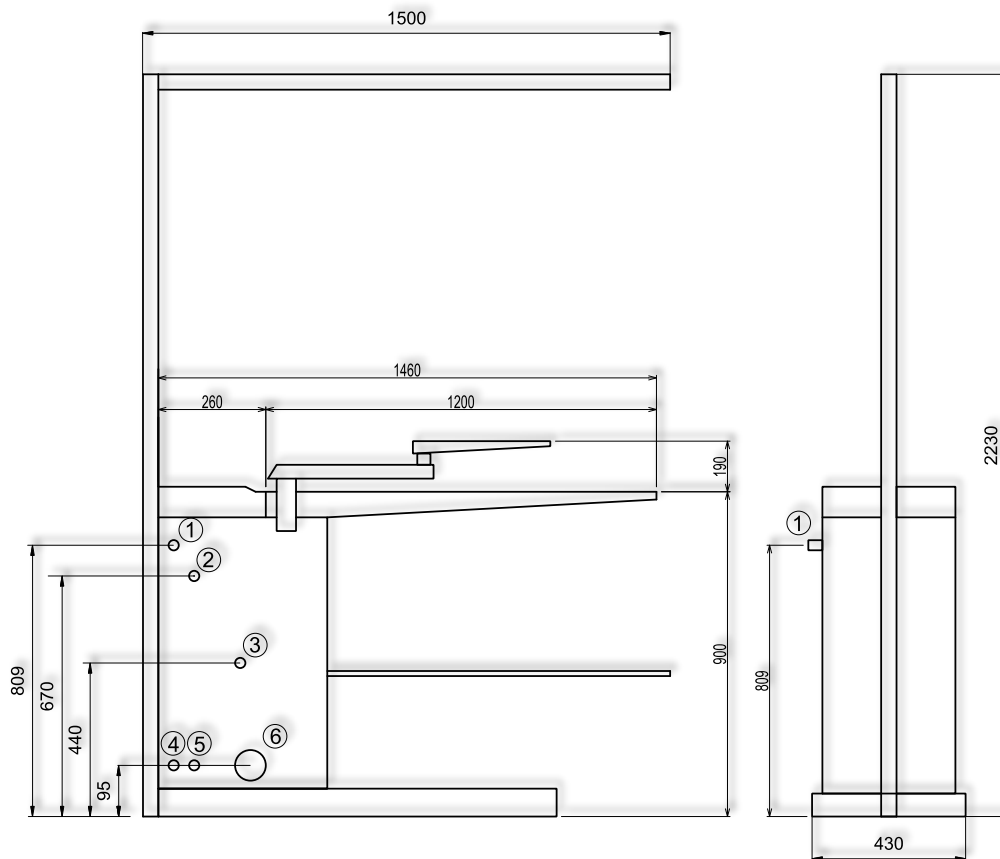


Pos.	COD	DESCRIPTION	Pos.	COD	DESCRIPTION
4365	45A005	Thermostat with thermofuse	224	222056	Handle
720	184453	Fixing screw for body	223	184457	Fixing screw for handle
704	253297	Hand protection plate	222	514057	Fixing nut for body
520	224217	Hand wheel	221	514056	Nut for handle rod
519	173236	Micro-switch support	220	534288	Hand wheel spring
518	22K038	Cap for body screw	218	184455	Fixing screw for body
517	224217	Sheathing	216	172057	Handle support
516	304284	Micro-switch wires	209	514055	Nut for terminal board
515	43D009	Micro-switch complete of wires and sheathing	208	304282	Electrical wiring for thermostat heater
514	43K007	Micro-switch case	207	304281	Electrical wiring for thermostat terminal board
513	184451	Micro-switch screw	206	304280	Electrical wiring for heater terminal board
510	264350	Plate	33	224255	Cable holder for plug
406	253255	Body	31	224260	Wire clamp
405/1	174020	Thermostat column	30	224215	Little spring
402	174019	Body column	29	Z23E01	Stiffened teflon shoe
401	253254	Plate with heater	18	25A002	Water spray gun
248	184449	Isolating washers	12	224210	Cable holder
247	174018	Earth spacer	11	51X005	Clip
246	22K037	Micro-switch cap	10	Z23C00	Electrical wire
245	22K036	Nut cap	9	07A002	Silicone tube
244	514058	Nut for rear cover	8	07A001	Rubber tube
242	224245	Rubber cap for wire holder	7	43H009	Plug by Ilme
230	184448	Indented washer	6	43H002	Plug by Wieland
229	222133	Rear cover	5	174009	Jointed iron hanger
228	184450	U-bolt screw	3	364297	Cable hose
227	174353	Fixing U-bolt	1	Z23E00	Teflon shoe
225	183255	Handle rod			

18 - OVERALL DIMENSIONS AND DRAWINGS







19 - WARRANTY

All our products are supplied with a guarantee for materials and manufacturing failures for a period of maximum 12 months from the date of the delivery.



The guarantee is extended as it follows:

In case of malfunction of the machinery contact the manufacturer and quote the trouble, the model, serial number and the operating conditions of the machine. At the receipt of the machine and after an accurate analysis, the manufacturer reserves the right to repair or to replace the product. If the machine is still under guarantee, the manufacturer will repair or replace it free, but if the returned product is not defective, the manufacturer reserves the right to charge the freight to the customer (transport, etc.). This warranty must be considered annulled in case of damages caused by an incorrect use, negligence, wear and tear, chemical corrosion, installation in contrast with the operating instructions. Any eventual modification or different use of the machine must be previously authorized by the manufacturer through a written document, otherwise the manufacturer can be considered free even from the guarantee bond. The parts of the machine which are subjected to wear and tear are not included in the guarantee. All the items not explicitly cited or damages and expenses caused by the defects of the product itself. Implicitly the customer accepts the conditions of the present warranty purchasing the machine. Eventual modifications to the guarantee must be authorized by the manufacturer through a written document.